

WIN: 025335.00
Riverside Ave and
William Oscar Emery
Drive

Sanford, Maine

Public Meeting #2
November 17, 2022



Introductions

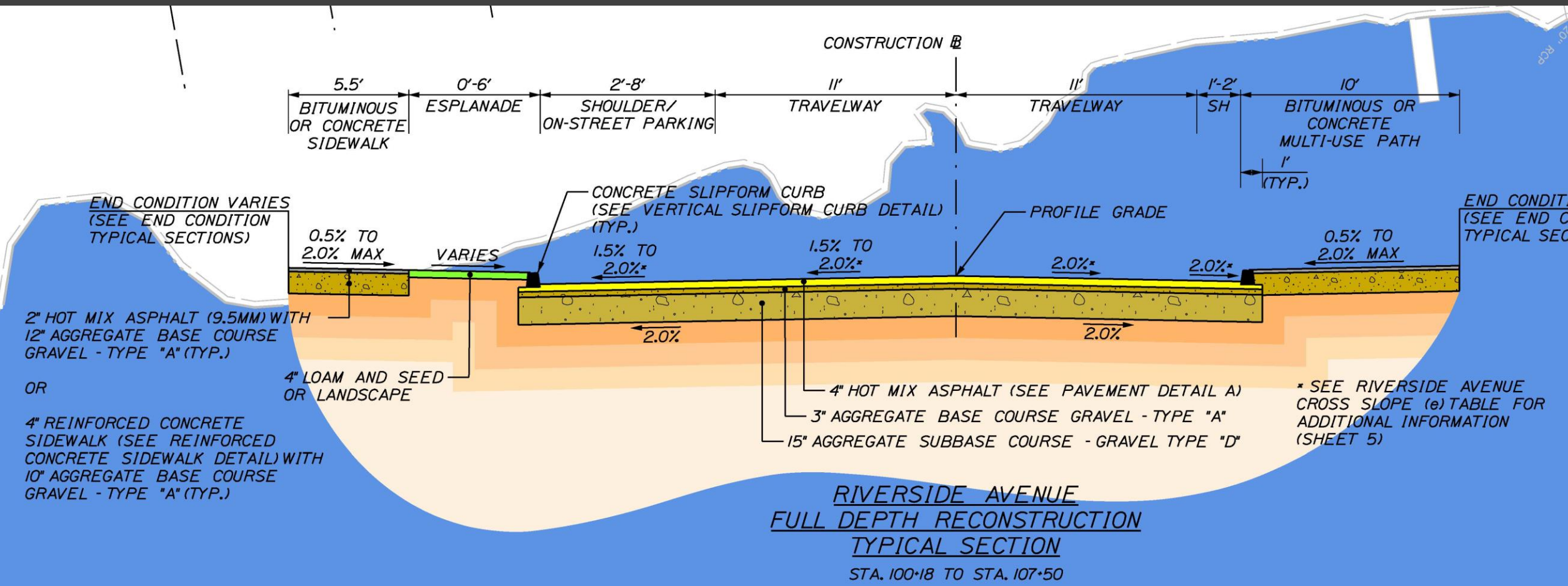
- Matthew E. Hill, P.E. – Sanford, Director of Public Works/City Engineer
- Gerald Dostie – Maine DOT, Project Manager
- Donald G. Ettinger Jr., P.E. – Gorrill Palmer, Principal
- Jared S. Winchenbach, P.E. – Gorrill Palmer, Project Manager



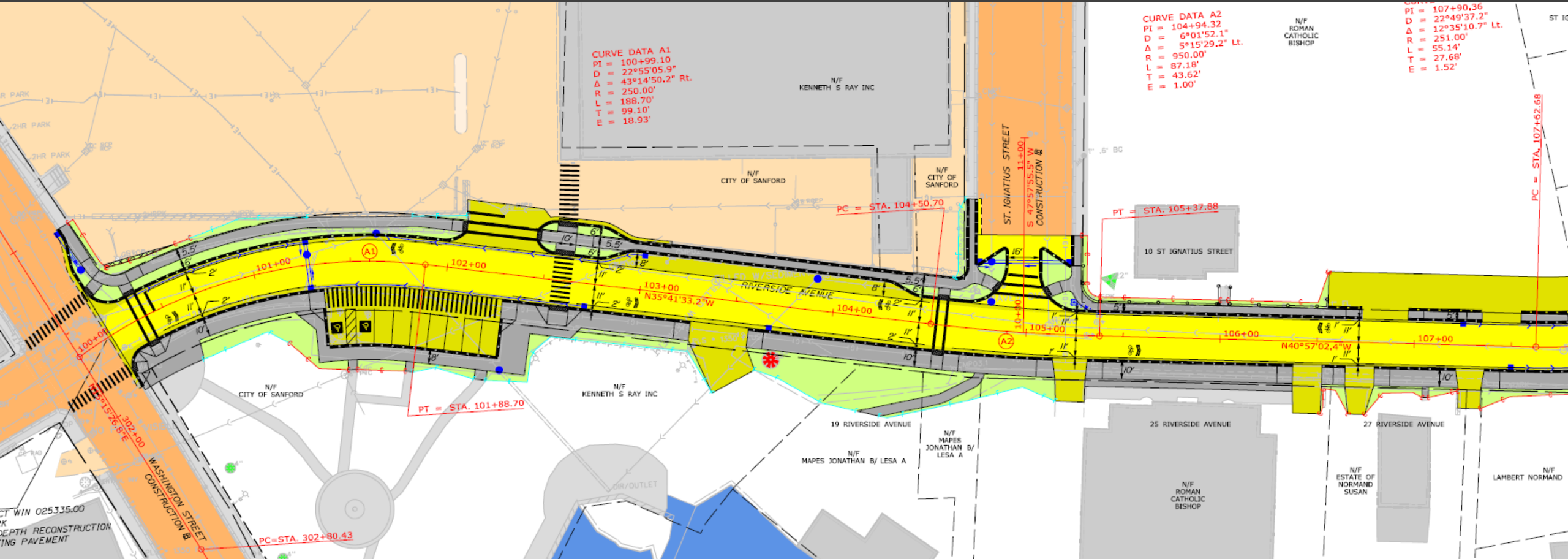
Big Picture – Mousam Promenade



Riverside Avenue



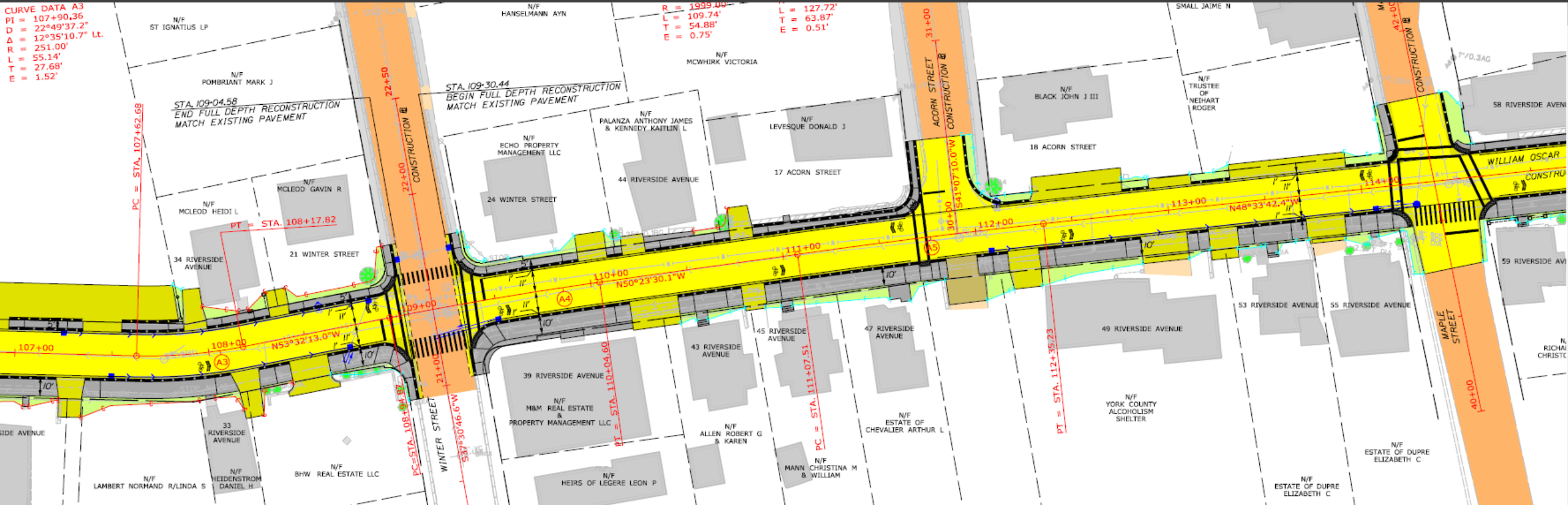
Riverside Avenue



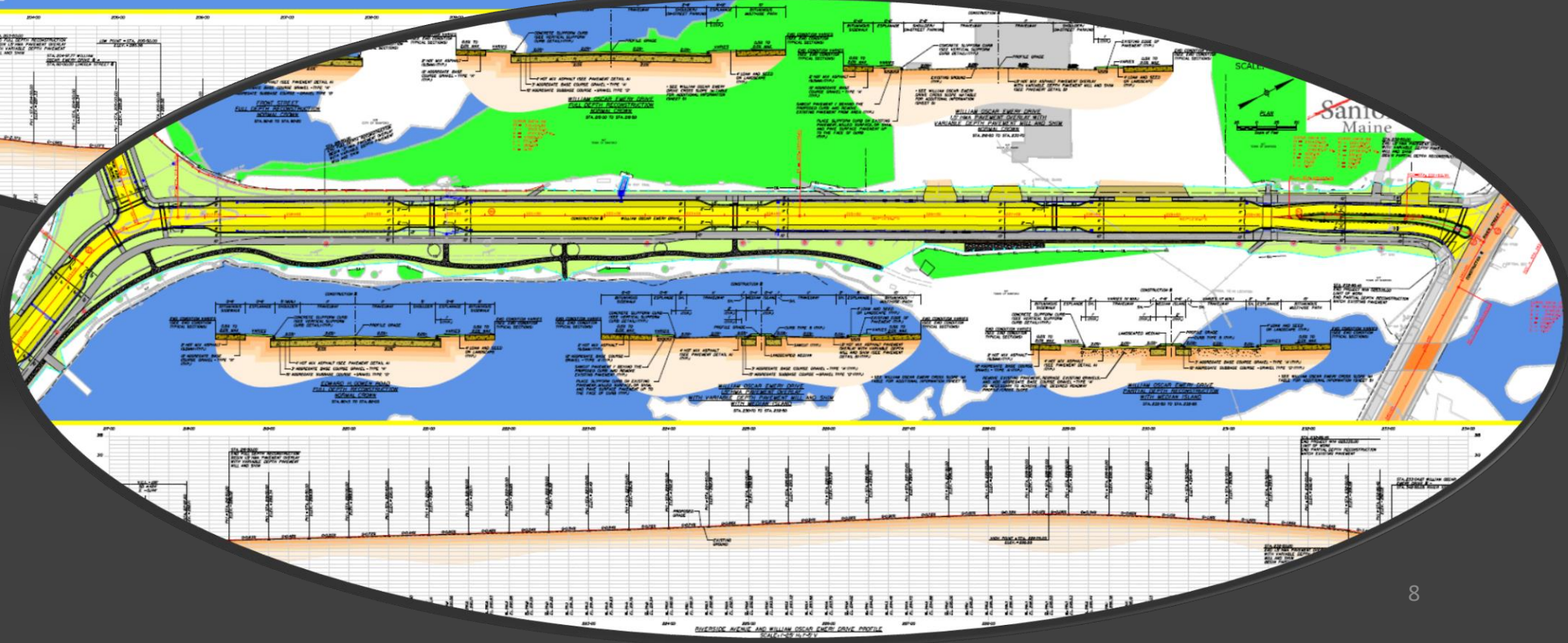
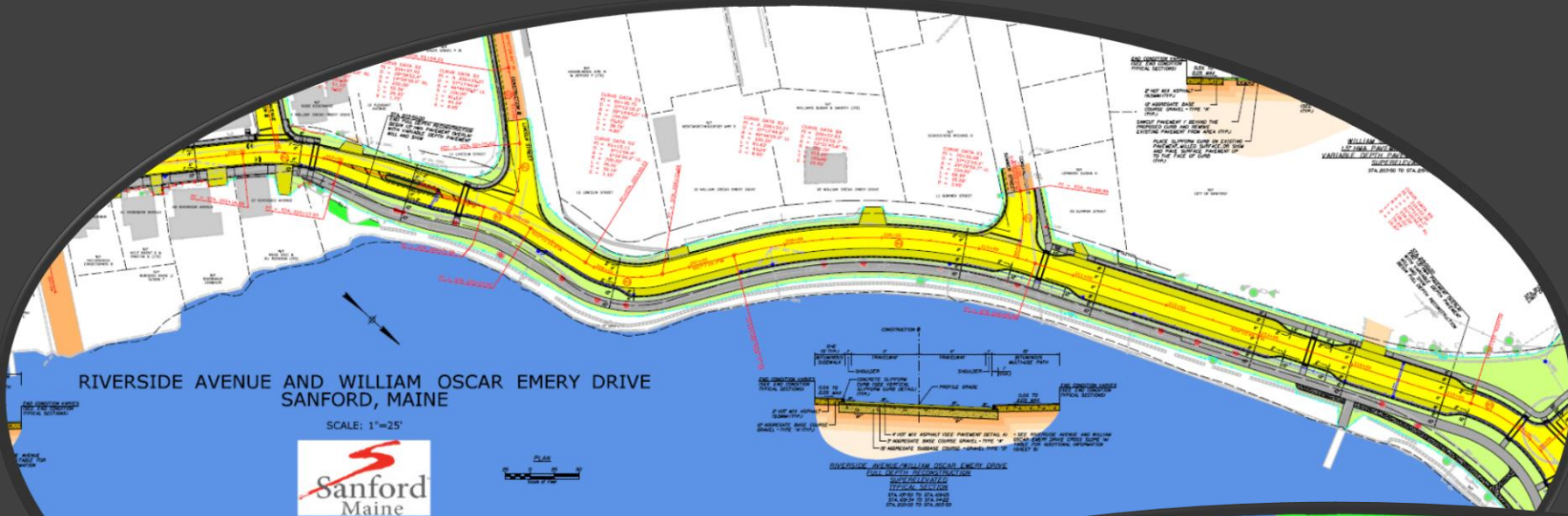
Riverside Avenue

CURVE DATA A3
 PI = 107+90.36
 Δ = 22°49'37.2"
 D = 12°35'10.7" Lt.
 R = 251.00'
 L = 55.14'
 T = 27.68'
 E = 1.52'

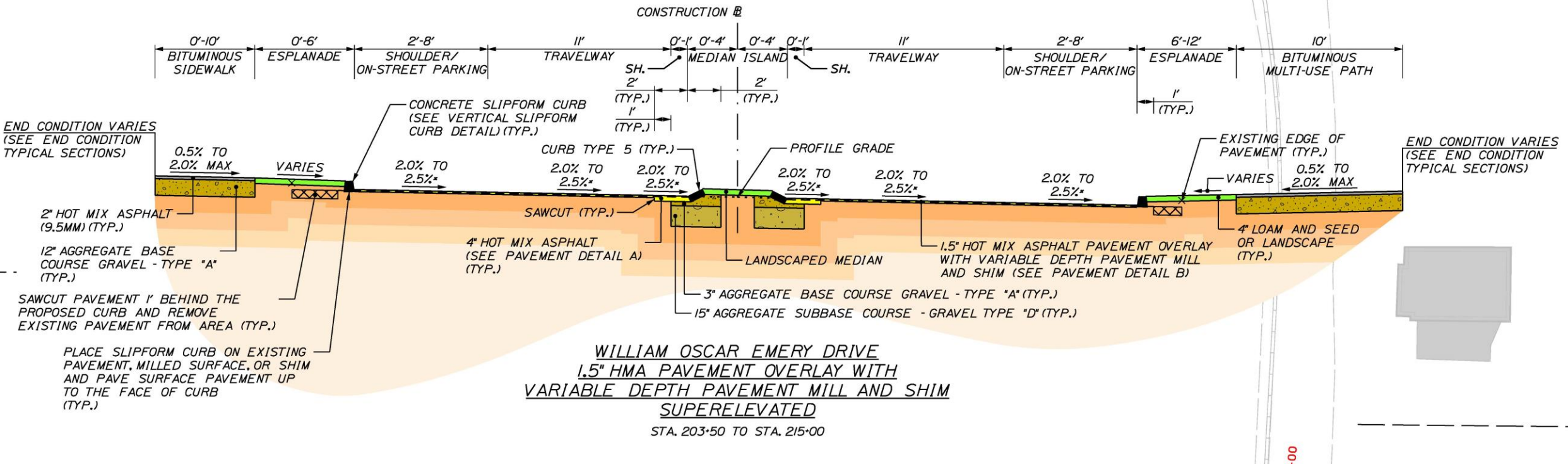
R = 1999.00'
 L = 109.74'
 T = 54.88'
 E = 0.75'
 L = 127.72'
 T = 63.87'
 E = 0.51'



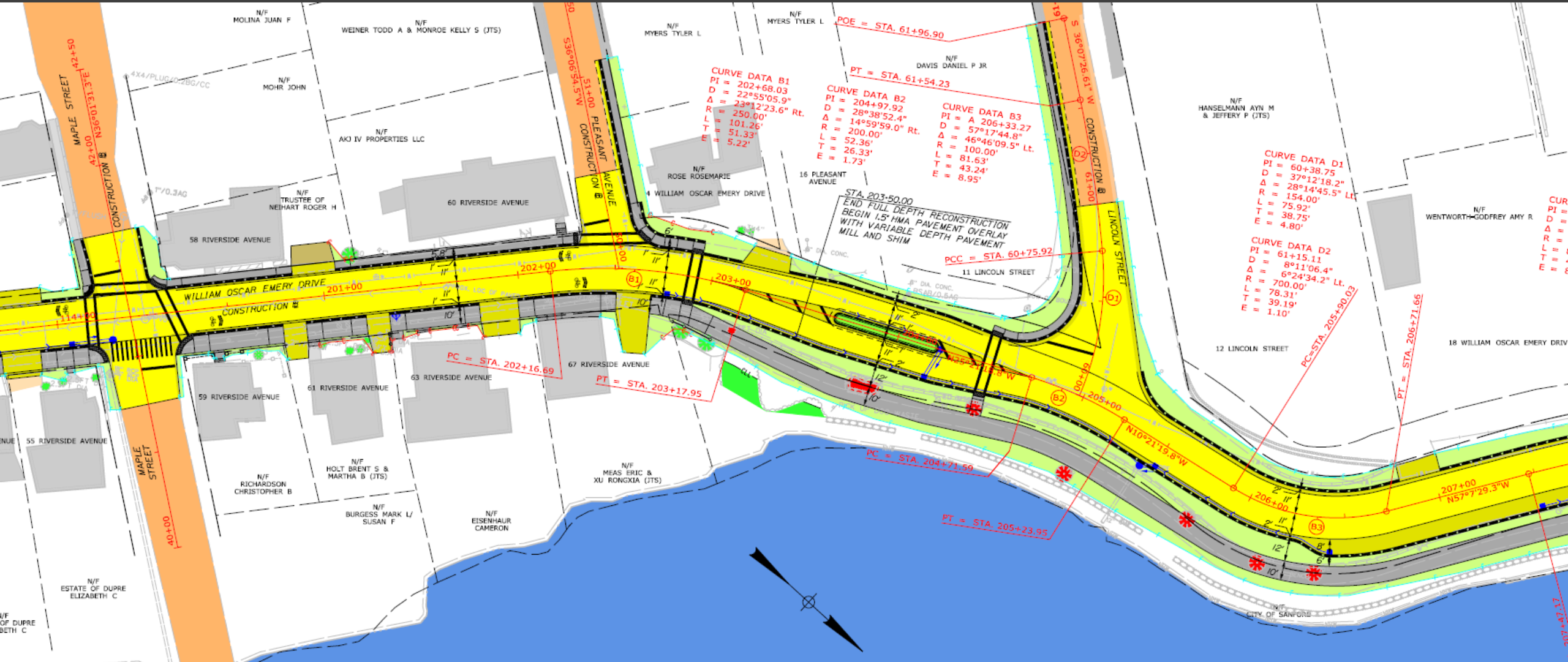
William Oscar Emery Drive



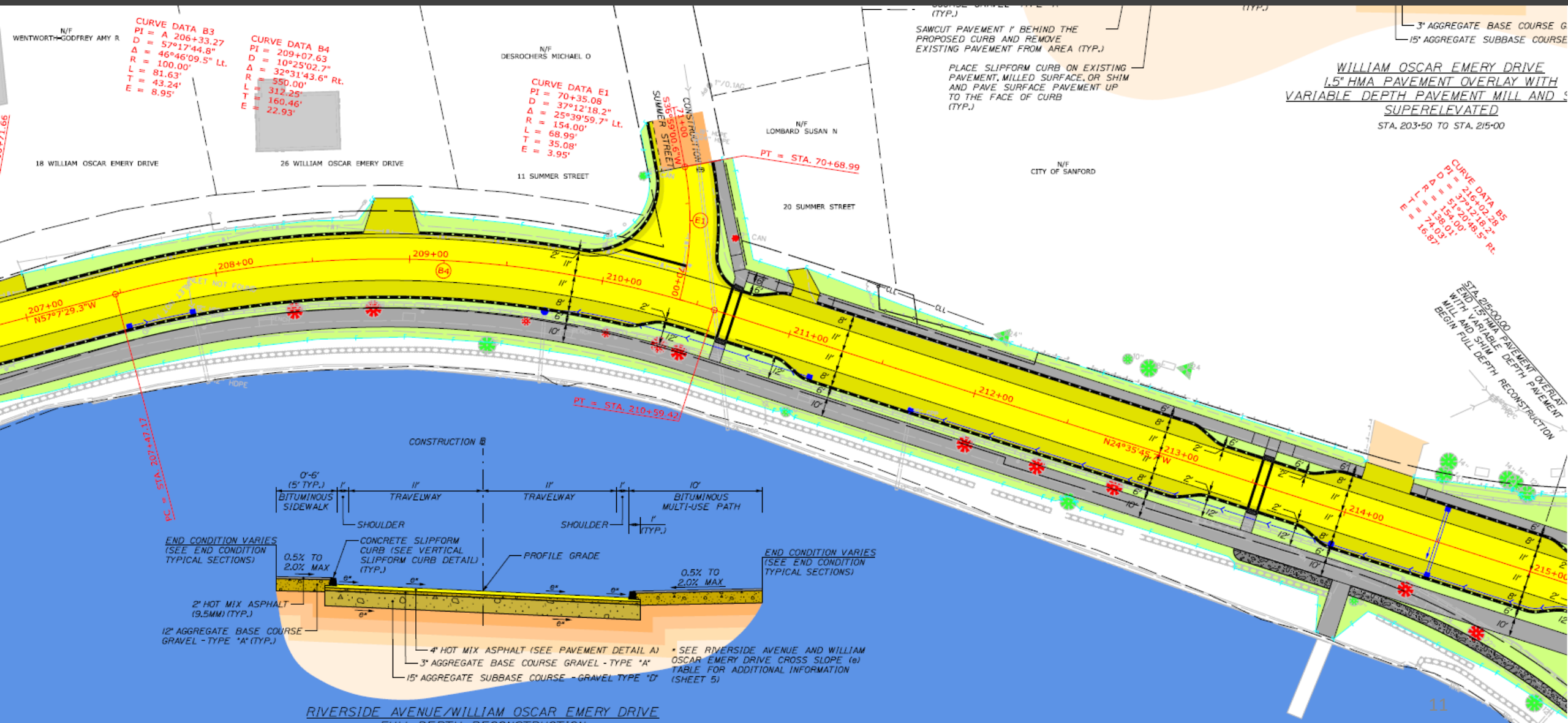
William Oscar Emery Drive



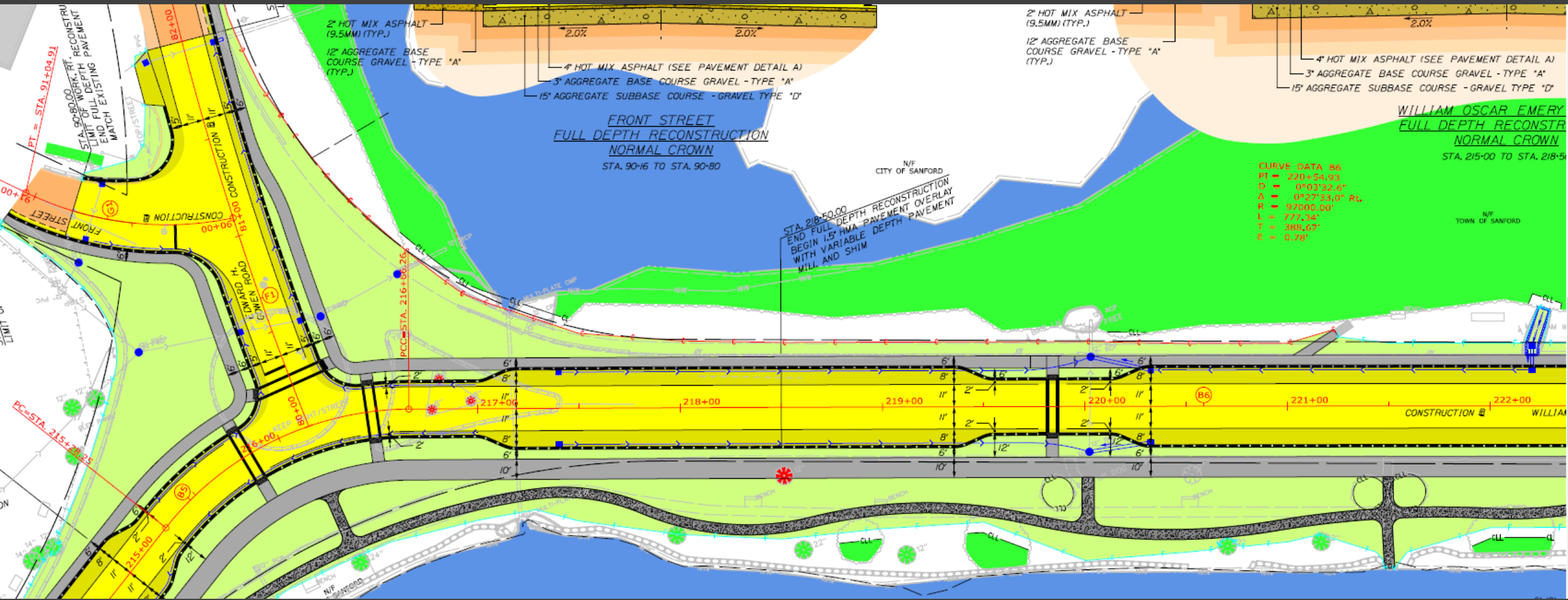
William Oscar Emery Drive



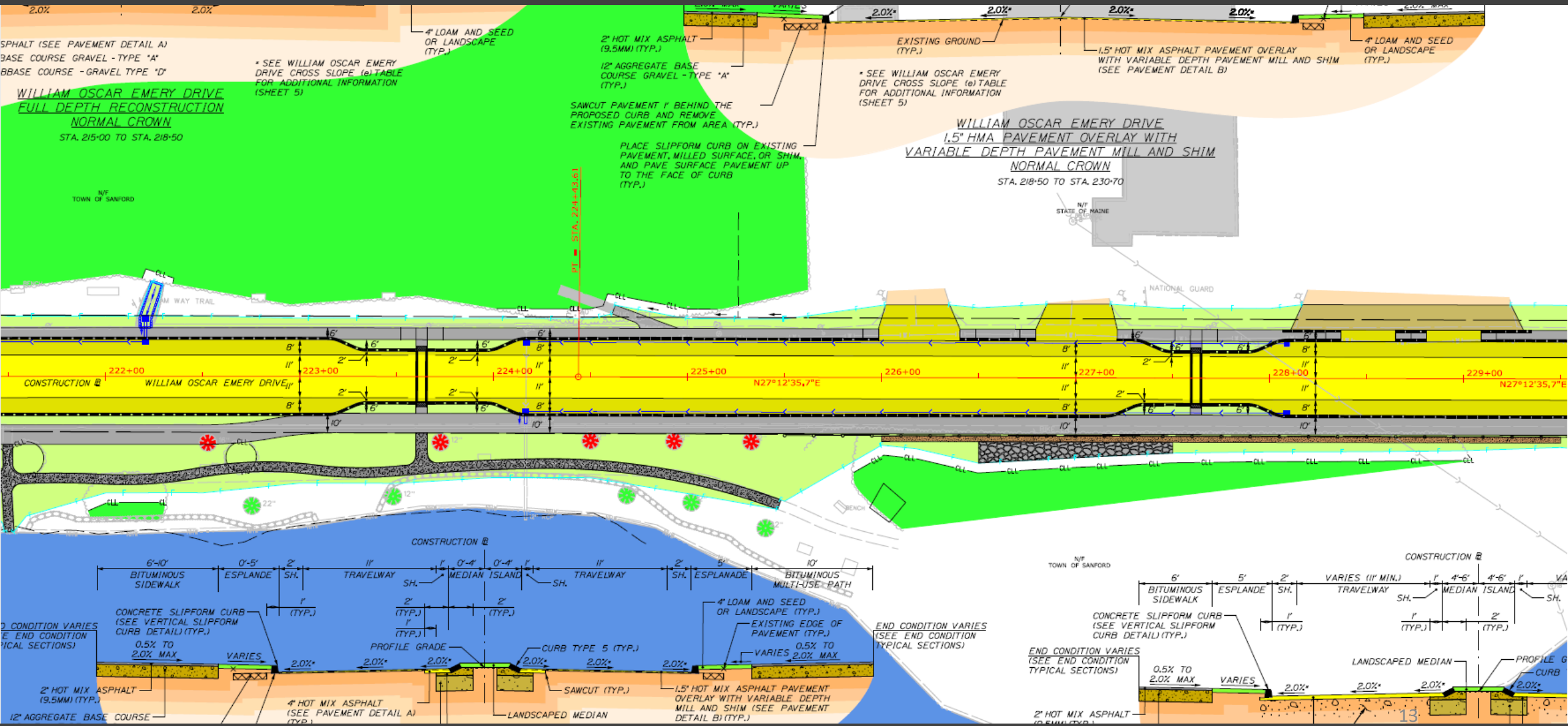
William Oscar Emery Drive



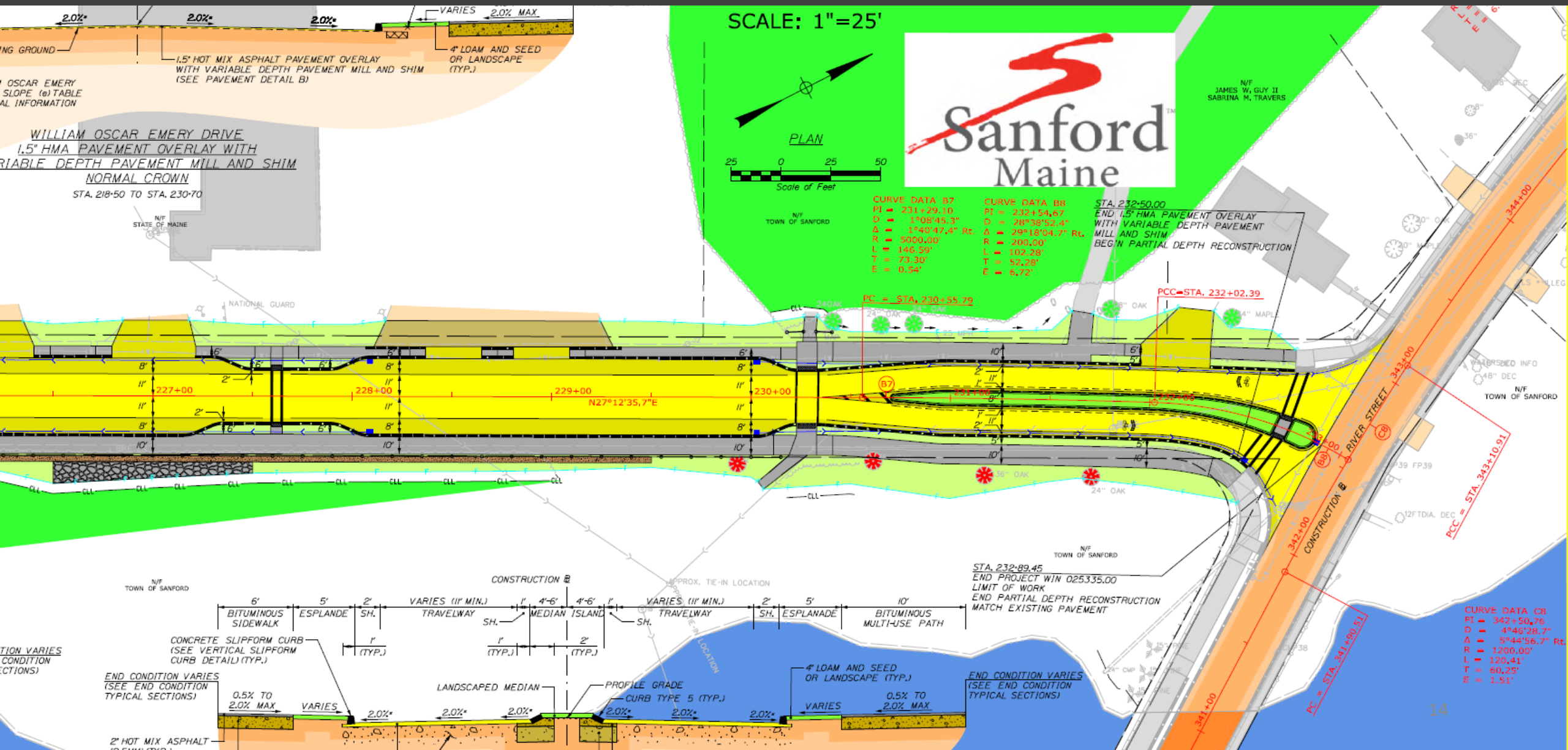
William Oscar Emery Drive



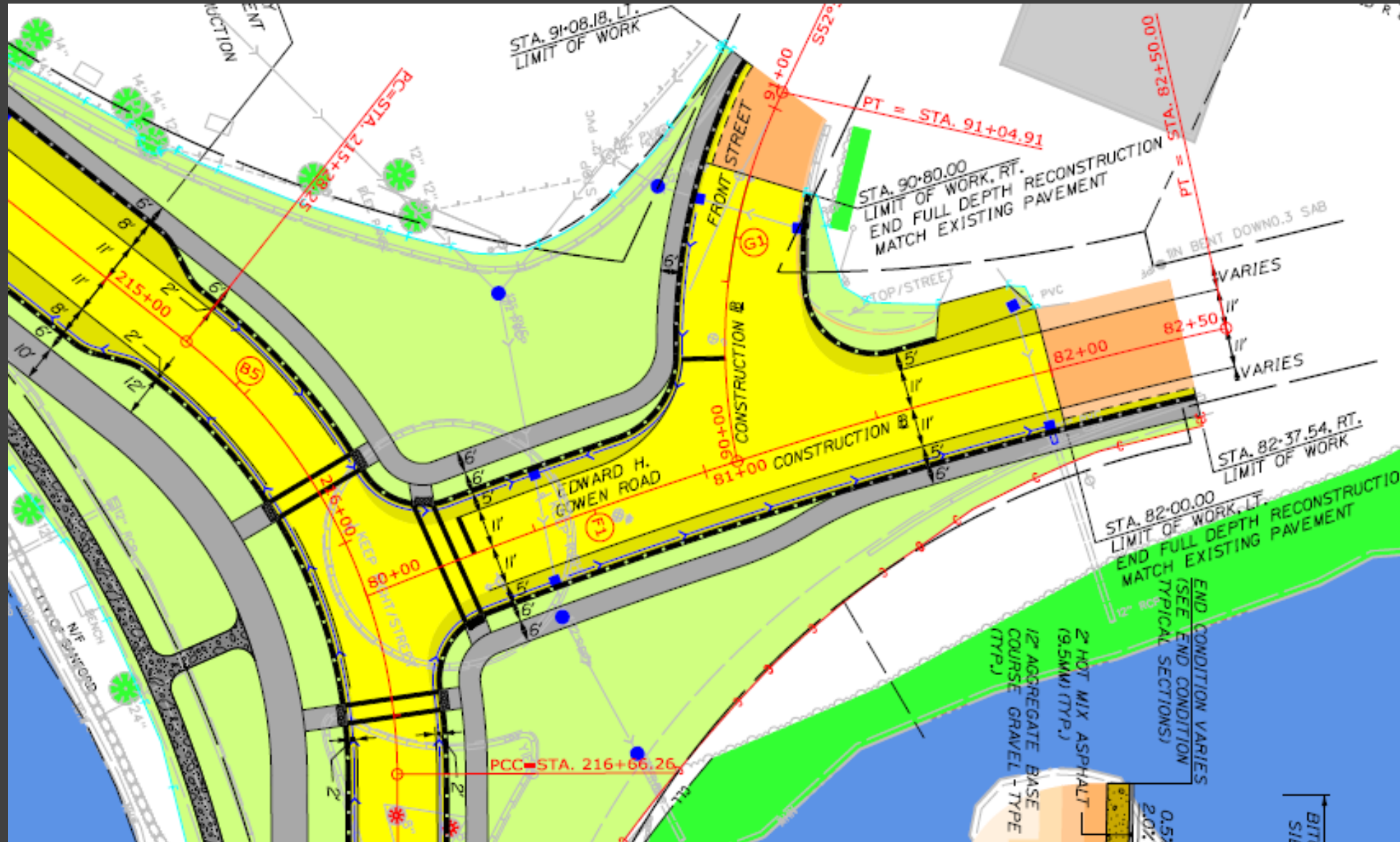
William Oscar Emery Drive

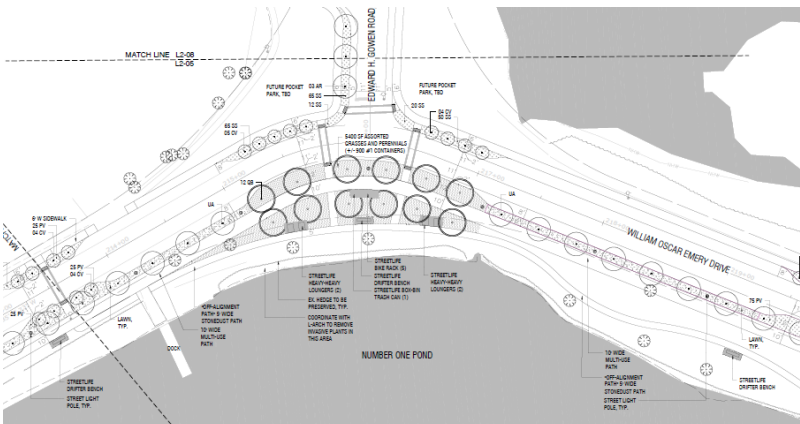


William Oscar Emery Drive



Edward H. Gowen Road and Front Street





Landscaping and Amenities



**Public Meeting #1
– May 19, 2022**

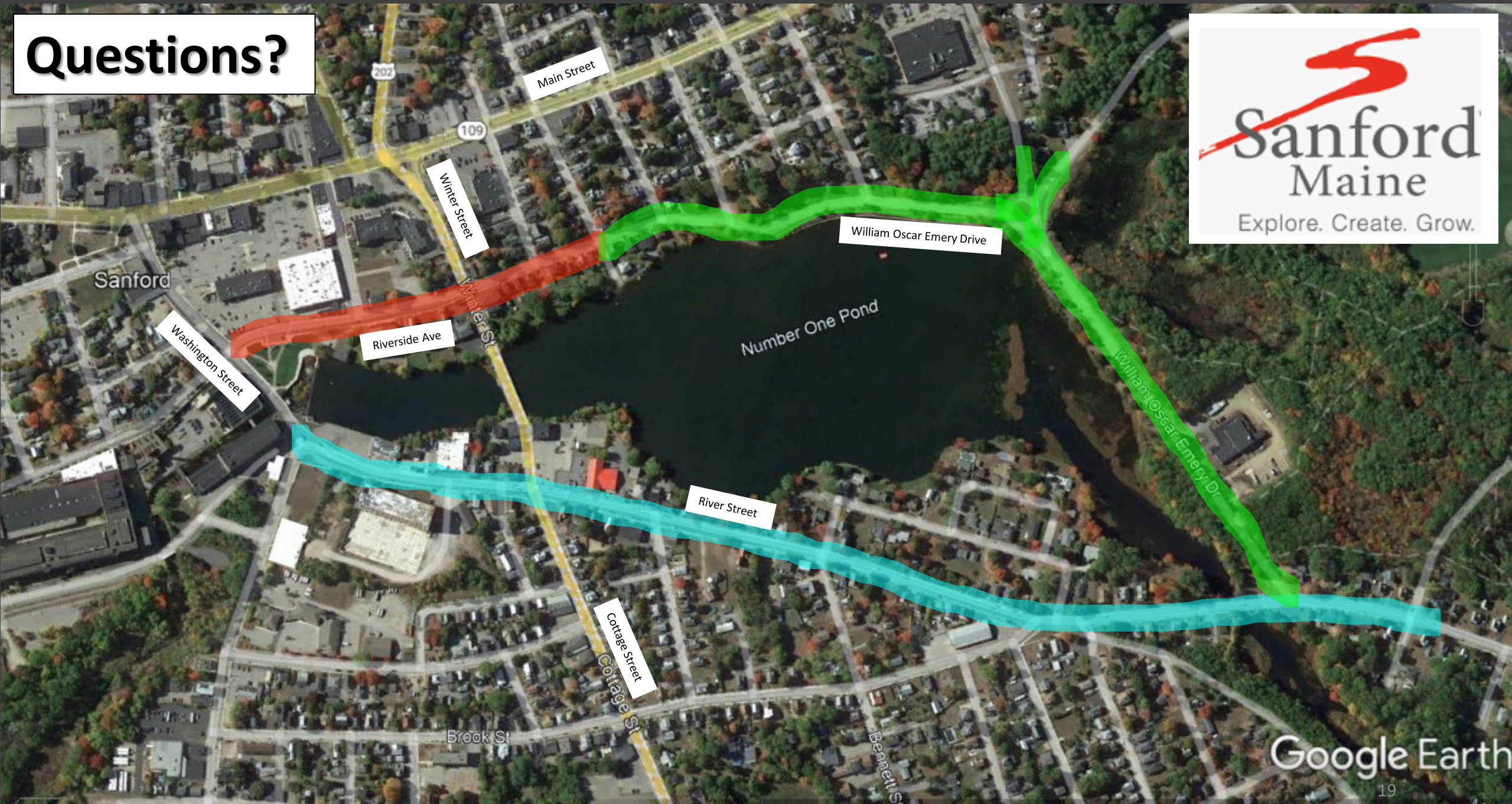
Google Earth

Looking Ahead

- Utility Coordination
- Environmental Coordination
- City of Sanford – Site Plan Approval
- Currently at 50% Design



Questions?



Google Earth